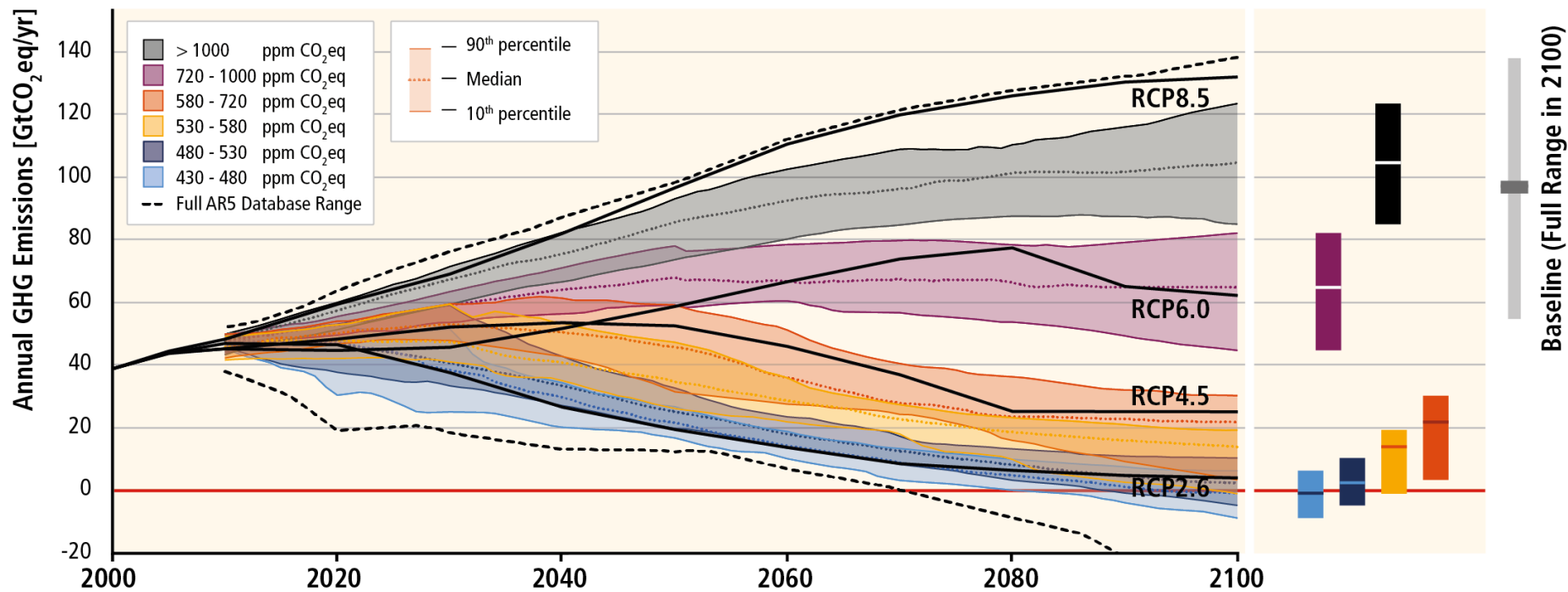


# Instruments pour gérer le climat

Thomas Sterner

Without more mitigation, global mean surface temperature might increase by 3.7° to 4.8°C over the 21<sup>st</sup> century.

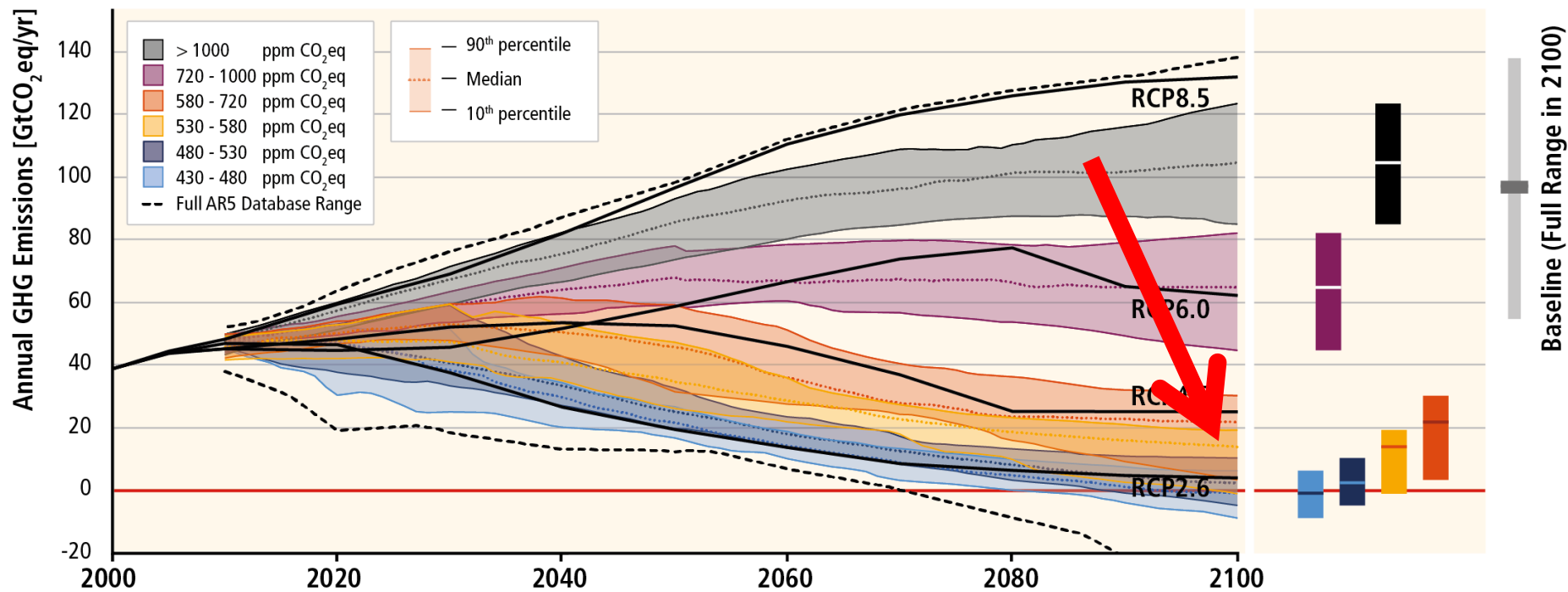
GHG Emission Pathways 2000-2100: All AR5 Scenarios



Qu'attendons nous?

Without more mitigation, global mean surface temperature might increase by 3.7° to 4.8°C over the 21<sup>st</sup> century.

GHG Emission Pathways 2000-2100: All AR5 Scenarios

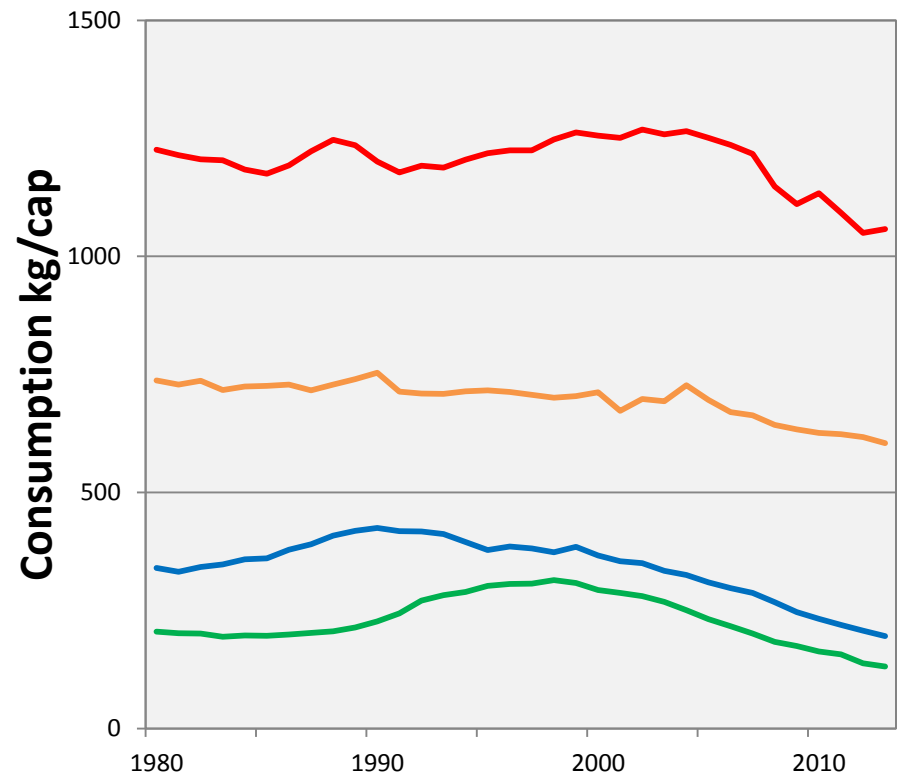
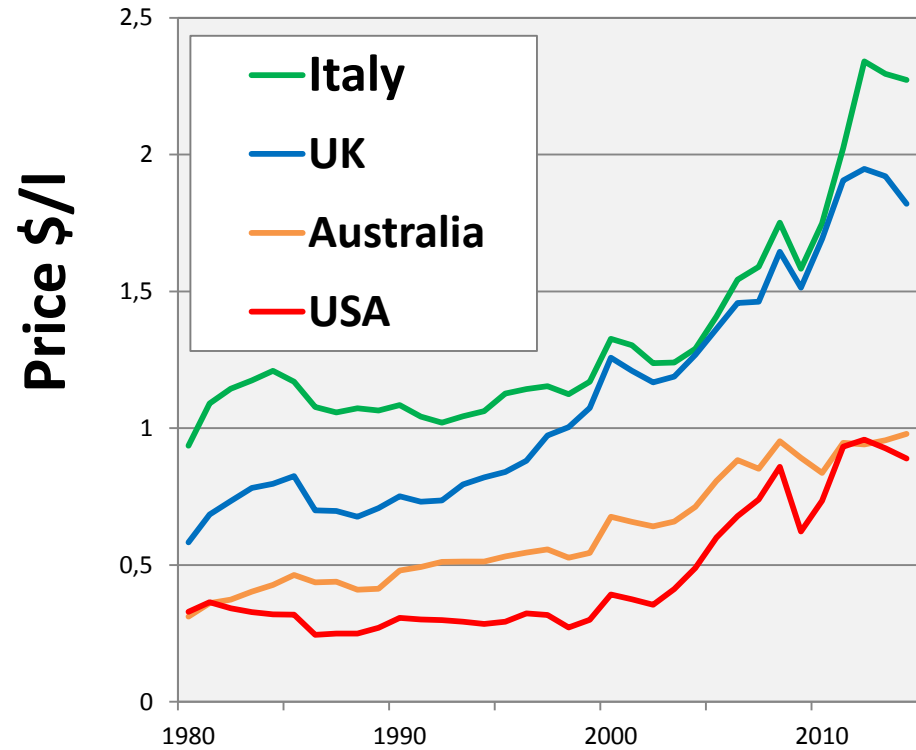


# All you need is

# All you need is TAX

# Gasoline

## Prices and consumption per capita



Prix Unique sur Carbone ?

# Climate treaty needed...





# INDC

# INDC

Intended  
Nationally Determined  
Contributions



# Accumulated global capacity

